

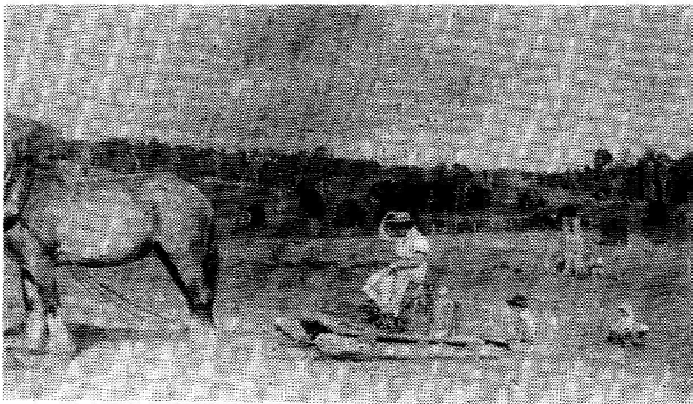
Dairying 1930s – 40s

Following the clearing of scrub, 38 dairies were eventually commenced in the CREDITON area (not including those operating in the Bee Creek and Dalrymple areas. It seems there were up to 60-70 dairies in the Eungella region eventually).

Cream for butter production was the main product, with skim milk usually going to the pigs. Cream (at this time from the CREDITON area), was first supplied to the Mackay Butter factory at Port Curtis (as mentioned in the last Regulla, earlier on from the Bee Creek and Dalrymple areas. It was railed to Gladstone).

The cream was initially carted by pack horse to the Netherdale railway station. Later in the early 1940s Harry Ward from CREDITON commenced to collect the cream with an old red Ford truck. The cream in cans was taken to the roadside by horse and slide.

Info from: Excerpt from: Dairying 50 years by Eric Ross in the "Memories of CREDITON" book c.1985



Horse & Slide taking milk out to the road

Photo courtesy of S. Tronson

Photos from: "Memories of CREDITON" book c.1985

Later Len Burgess, who owned and ran the Eungella Guest House (featured in a previous Regulla) carted it in his old Dodge truck. It knew the road that well, that it could go around several corners, going down the Range, with out a hand on the steering wheel guiding it while Lennie lit his pipe. Oh what a pipe it was too. (Of course the Range Road was only a very clayey dirt road then. It was first sealed in 1959)

Excerpt from: Norm Foster's book " The Roof Garden Of Mackay" c.1985

Norm Foster came up to his selection block in 1935. He eventually built the house on the corner of what is now called Fosters Rd and Eungella Dam Rd., where Warby & Tommy now live.

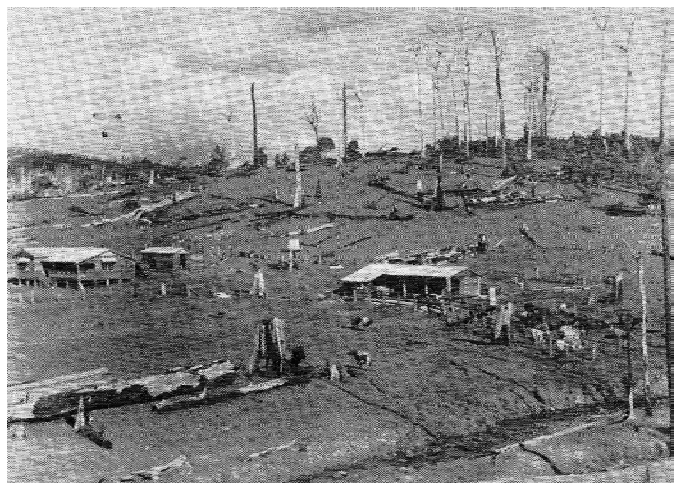
It would be greatly appreciated if any one could identify which CREDITON property this was.

As always any corrections or additional information are welcomed.

(An answer was received by the next Regulla)

(smaller font is Glenda's comments)

Contributed by: Glenda Parish



Typical Farm in 1940

Phot courtesy D. Read

Typical farm 1940s - Photo Courtesy Don Read
Don Read was a school teacher at CREDITON School 1946-50

Interested in finding out more about Eungella's history project?
Ask for contact details at the school.